

Surface Mounted Series

FSSD-LED/DN

MODEL

: FSSD-LED/DN

DESCRIPTION

: Surface/Suspended Light Pendant

RECOMMENDED INSTALLATION AREA

: Office, Lift Lobby, Caffeteria, Hypermarket

INGRESS PROTECTION (IP)

: IP20

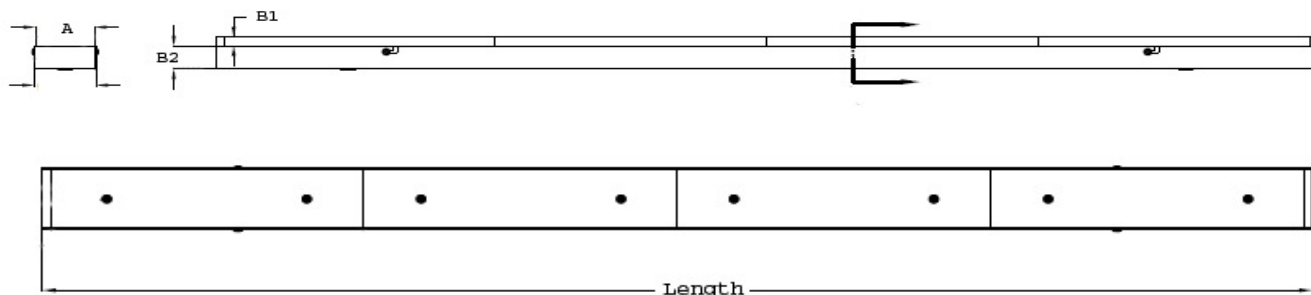
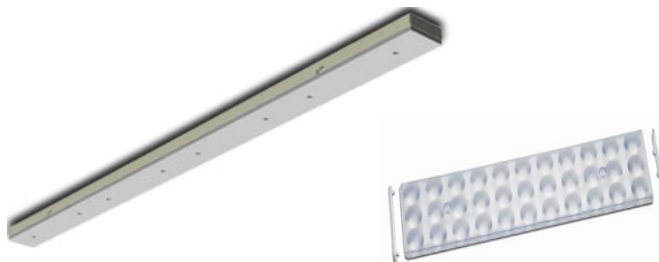
DIFFUSER OPTION

: Clear,Frosted,Prismatic,Opal

REFLECTOR OPTION

: N/A

MODEL	WATTAGE	Length x W(A) x H(B) [mm]
FSSD-LED/DN 68	68w	1157 65 40
FSSD-LED/DN 70	70w	1157 65 40
FSSD-LED/DN 79	79w	1157 65 40
FSSD-LED/DN 85	85w	1442 65 40
FSSD-LED/DN 107	107w	1442 65 40



For bottom connection (BC)

Typical Light Distribution Curves

Data are available in .ldt format for download under www.vossloh-schwabe.com.

